

# Technical ecological consultancy

Combining ecological and survey expertise with database, mapping and software solutions.

## Field survey

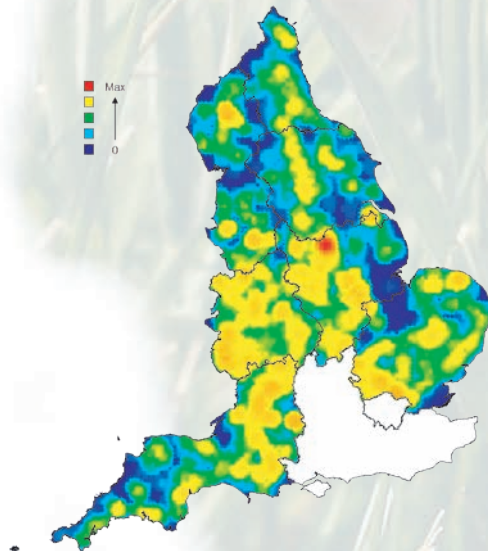
- Project and survey management
- Methodology development
- Integrated field data collection
- Custom databases and GIS development
- Advanced data analysis and reporting
- Web mapping of results



## Data capture, management and analysis

We also offer more technical ecological analysis:

- Aerial photography mapping using a model plane
- Evaluation of ecological data
- Aerial photograph interpretation
- Efficient digitising of datasets
- Manipulation of spatial data
- Spatial modeling to make predictions
- Statistical analysis



Wood-pasture and parkland hotspot map



## Conservation management planning

- Writing plans for conservation and amenity sites, species or habitats, or assisting you to do so
- Stakeholder consultations and field visits
- Developing achievable management actions
- Supply of 'conservation management' software for dynamic planning and implementation:  
[www.software4conservation.com](http://www.software4conservation.com)

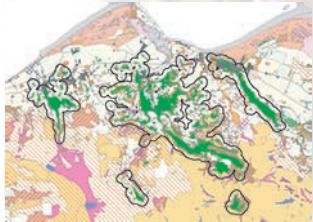


## Desk research

- Species and habitat research
- Literature review
- Consultations with stakeholders and specialists
- Statistical analysis
- Reporting and presentation

## Example projects:

Development of a condition assessment methodology for non-statutory woodlands and testing on 100 survey sites in England and Wales  
for Defra and the Countryside Council for Wales



Exploration of habitat connectivity modelling techniques, specification of a connectivity assessment tool and modelling habitat networks in south Wales  
for Kent County Council, Nord-Pas de Calais and the Countryside Council for Wales

Analysis of Intertidal Phase 1 data against SSSI selection criteria, by creating a tool to reduce weeks of manual analysis to 20 minutes of repeatable computation  
for the Countryside Council for Wales



Development of an Open Mosaic Habitat identification methodology, survey website and habitat inventory, plus habitat and invertebrate survey of 98 sites  
for Defra, Natural England and the Countryside Council for Wales

## Interested?

Visit our website at [www.esdm.co.uk/ecology](http://www.esdm.co.uk/ecology)

or contact Mike Lush on

+44 (0)1874 713064 or [ecology@esdm.co.uk](mailto:ecology@esdm.co.uk)

exeGesIS SDM Ltd.  
Great House Barn  
New Street  
Talgarth  
Brecon  
Powys  
LD3 0AH  
t: 01874 711145

