



XG

exeGesIS SDM Ltd

Edition 7

NEWS

Information Technology and Mapping
for Countryside & Conservation

Do Not Disturb - Stone Curlew Nesting

We have been working with researchers at Cambridge University, the RSPB and English Nature to harness the power of GIS to help conserve the threatened stone curlew. The stone curlew, like many other ground nesting birds, is suffering from loss of habitat and is particularly sensitive to disturbance when nesting.

Research work has modelled many different types of disturbance (walkers, cyclists, military vehicles, etc) at different frequencies, but as disturbance is almost entirely from visual stimuli (the curlew needs to actually see the cause of a disturbance), a GIS based application was needed to turn the research into a practical tool for use by land managers and conservationists.

Using MapInfo Pro, exeGesIS built a solution that generates birds eye views of the land surrounding their nest, taking terrain, screening vegetation, disturbance type, location and of course the height of the bird into account. The application then uses the model to calculate, map and graph the effects of different disturbances.



Land managers are now able to use the system to help them plan where to undertake habitat maintenance to encourage nesting, and also to inform management needed to minimise the effect of activities on neighbouring routes.

What's In My Back Yard?

The National Biodiversity Network (NBN) Gateway holds vast banks (20 million records at the last count) of biodiversity data. Scottish Natural Heritage's (SNH) 'WIMBY' project makes some of this amazing information resource more accessible to non specialists.

Working closely with SNH and NBN staff exeGesIS developed a solution that enables any organisation to display data from the NBN gateway on their own websites. The solution uses a 3rd party server to make an information request to the NBN web services (e.g. all records for a particular species within an area). The NBN gateway extracts this data and returns it (along with maps if appropriate) for the 3rd party website to format and display. This is a low-cost and customisable approach for anybody wishing to:

- Display NBN data on your own website and possibly merge with other non NBN or locally held data
- Control how and what data is displayed and add local branding to the NBN data
- Make use of the NBN Ordnance Survey mapping license so they can display distribution maps with up to date mapping on your own website

Who are we?

exeGesIS is an IT and environmental consultancy. We are specialists in digital mapping, geographic information systems, database and web applications, data capture, training and survey.

Our 21 strong team of consultants and developers are knowledgeable, enthusiastic and professional and they really do enjoy (well most of the time anyway) helping clients to get the most out of their IT solutions.

Over the last 12 years we have developed strong working relationships with just about all of the major countryside organisations in the UK as well as many of the smaller and charitable ones and as such many of you will know us well. However if our name is new to you, then please check us out by visiting www.esdm.co.uk.

What's in my backyard

By using this site you are agreeing to be bound by the [Terms & Conditions](#)

Search for places > Pick a place > Pick a group or species > View details

People are being urged to submit sightings of both red and grey squirrels, as part of the Scottish Squirrel Survey, which is funded by Scottish Natural Heritage (SNH).

- The red squirrel is still widely found in Scotland in areas such as the forests in the Cairngorms
- The grey squirrel is spreading northwards and has been recorded as far north as Aberdeen - current known distribution Map

The need for information on the distribution of both species is now particularly urgent as the first evidence of Squirrel Pox virus was identified in a grey squirrel in the south of Scotland last year. Grey squirrels act as a host to the spread of this disease which is fatal to our native red squirrels. There is now a real threat that Scotland's red squirrels could be displaced by the disease-resistant grey squirrel, as has already happened over most of the rest of the UK. More...

Start your search (Help)
Please specify a location to search for

Cairngorms

Valid search terms include grid reference, first half of postcode, town name, and named features such as Munros or Corbetts

You can specify an exact distance to search (optional) km

Current News

GIS training

With a new range of updated course programs our training team have been busier than ever running courses from our dedicated head office training suite and from client offices all over the UK. Our approach of keeping training groups small and running courses in a relaxed and informal environment seems to work well and we are pleased to have recently been awarded the GIS training contract for the Countryside Council for Wales. CCW training manager, Helen Jones said that "Getting the best staff training is important us and helps to maximise the return on our GIS investment. Following a rigorous tender process we selected exeGesIS to be our sole GIS trainer as their courses have been very favourably reviewed by our staff and they have the capacity to meet all our training requirements from introductory through to advanced".

Our well appointed training suite is located in the Brecon Beacons National Park, which makes it a fantastic location for relaxing after a days training but is also less than 90 minutes from the Midlands, the Bristol area and most of Wales.

99% of trainees have given our MapInfo and ArcGIS trainers an 'excellent' or 'good' rating (over three-quarters provided an 'excellent' rating) and we are working hard on the other 1%!

Training prices range from £95 to £129 per person per day for a maximum sized group of 5.

www.esdm.co.uk/training.asp

Carol Bateman : (01874) 713066 : carolb@esdm.co.uk

MapInfo Premier Partner

We are delighted to have been recognised by MapInfo as one of their most experienced and leading suppliers of MapInfo products and services. Awarding the Premier Partner status to exeGesIS, James Witty, MapInfo's Sales Director said "exeGesIS have been a long term supporter of MapInfo products delivering many innovative applications based on the MapInfo platform. We are delighted to recognise the quality of the company through the award of the prestigious Premier Partner status".

Having been a MapInfo developer and partner for over 12 years, exeGesIS SDM is able to offer industry leading experience and solutions. Please get in touch if you would like a quote or just a chat!



Carol Bateman : (01874) 713066 : carolb@esdm.co.uk

Richard Bowen : (01874) 713067 : richardb@esdm.co.uk

Microsoft certification

We are now in our second year as a Certified Microsoft Partner and would like to thank all of our clients who have kindly provided references this year. Microsoft certification provides external confirmation that our software is meeting stringent Microsoft criteria. All of our products are benefiting from our current development focus to improve user interfaces and enhance interoperability.

Keep your eyes open for the new product releases, all of which are very much interface and usability focussed. If you have any ideas or requests for improvements, then please email them to the product specialists or to tonyp@esdm.co.uk. Hopefully a lot of the ideas will already be in the pipeline, but all input helps us to understand your requirements and build better software.

The Development Team.



Head office and training suite



EGNOS is Go!

At last EGNOS is up and running, but what is it? EGNOS (European Geostationary Navigation Overlay Service) is a new European global positioning service that is set to improve existing GPS accuracy even further for many users. A network of ground monitoring stations constantly measure GPS errors and master control centres then use these errors to generate corrections. These are in turn transmitted via uplink stations to 3 geostationary satellites and from here the correction information is transmitted to any suitably enabled GPS receiver. The net effect is an increase in positioning accuracy to better than +/- 3m for 95% of the time (subject to the usual limitations – good view of the sky etc). The EGNOS system is termed a Wide Area Augmentation System (WAAS) – ie the system augments the existing GPS information, and to receive the EGNOS signal you need a WAAS enabled GPS. Some GPS are WAAS capable but this must be turned on, whereas others are immediately WAAS ready, so you need to read your GPS manual!

National datasets published

Magic (the web-based interactive map portal for environmental data) has published into the public domain many of the datasets that exeGesIS has helped to capture and process in recent years. In addition to national scale datasets for grasslands and saline lagoons, we have worked on an upland habitats project developing a dataset covering some half a million hectares. For information visit www.magic.co.uk.

Our data capture team offers specialist understanding of environmental datasets combined with advanced GIS and text data processing capabilities.

Tristan Craddock : (01874) 713064 : tristanc@esdm.co.uk



CAMS is the comprehensive solution for managing public rights of way, trails, green space and in fact almost anything to do with public access land. An expanding client base already over 75 strong, confirms its position as the UK market leader.

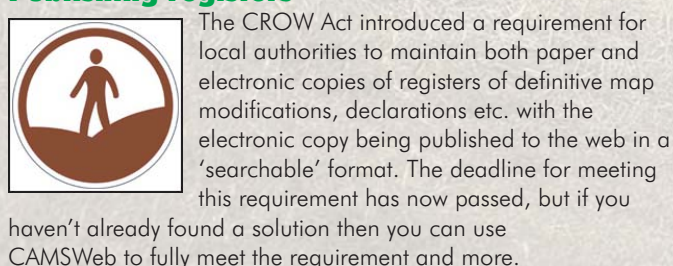
Publishing countryside access maps to the web has become a relatively simple task in recent years and even a basic map interface with searching, 'map zoom' and 'map pan' functions can be a really useful tool. CAMSWeb takes this a stage further and allows users to select the type of information they want to see (access areas, path gradients, riding routes, etc) and then to interrogate the map to bring up more detailed information and even photographs.

Tim Taylor, Rights of Way Manager for Lincolnshire County Council says of their recently installed system that “it’s proving to be a really helpful resource, particularly for specific interest groups such as cyclists as they can produce maps showing only those paths of interest. It has also reduced workloads as we are finding that a number of enquiries can be dealt with by referring people to the website”.

New trees from old

A new and very useful facility introduced in CAMS V5.1 is the ability to create a new results tree from an existing tree. To do this select individual records from the old tree whilst holding the Control key down (or Shift key to select multiple records) and then send the selection to a new tree by right-clicking in the Results Tree and choosing 'Copy to new tree'. The new tree may then be used in a variety of circumstances – for instance selecting routes for survey, selecting routes for inclusion in a promoted route or filtering records prior to creating a report.

Publishing registers



The system can be configured to show more or less whatever information you like under each of the tabs. Hyperlinks can be used to show images and linked documents.

Find Info Show Feedback

Choose a theme

Select a theme from the list...

Select a theme from the list

- Public Paths and Access
- Path Furniture
- Accommodation
- Horse Riding Routes
- Public Paths
- Other Furniture
- Property Address
- Other Path
- Bridleways
- Footpaths

The CAMS user lists continues to grow and many authorities are expanding their use of CAMS and looking at integration with other corporate systems.

Well over half of the rights of way network in England and Wales is managed using CAMS and more than 80% of authorities in Scotland also use the system for managing their emerging 'core path networks'. Recent major new CAMS V5 users include York City Council, Oxfordshire Highways and Swansea City Council

To help us meet growing demand we have recruited Simon Allen to the CAMS team joining Richard, Kathryn & James.

CAMS training

Training courses held at our head office in the Brecon Beacons National Park are always popular and we run foundation and update courses for CAMS users as well as survey management and practical field surveying courses. Courses are presently scheduled for the weeks beginning:

2006	9th & 16th October
2007	19th & 26th February 11th & 18th June

www.esdm.co.uk/cams.asp
Simon Allen : (01874) 713076 : simona@esdm.co.uk
James Hargreave : (01874) 713069 : jamesh@esdm.co.uk



HBSMR for archaeology and listed buildings

The Historic Buildings Sites & Monument Record

HBSMR v3.5

HBSMR is the industry leading data management solution for managers of Historic Environment Records (HER). Developed in partnership with English Heritage, the system is used to manage heritage data across most of the UK's authority areas.

HBSMR product news

Many HBSMR users are widening their remit, joining up archaeology and conservation teams, and morphing from archaeological "Sites and Monuments Records" to all-encompassing "Historic Environment Records". HBSMR helps in this process, with its integrated GIS for mapping all kinds of historic landscape features, easy interoperability with other systems, with its HLC module, and with its facilities for recording buildings and architectural components.

HERs are increasingly expected to provide data in digital form, so they are now as likely to provide data from HBSMR as xml plus GIS files, as they are to provide reports and maps as PDF or Word files. We are always working to make sure HBSMR can meet these demands, and recently helped our clients output the appropriate data to complete the 'Farm Environment Plan' spreadsheets.

We are very pleased to have recruited two new members of staff to the HBSMR team – Keith Westcott, formerly at the Archaeology Data Service, and Paul Cripps from Southampton University – so we now have 4 specialist archaeological IT consultants, working closely with the back-room software development team.

We have been working hard on HBSMR v3.5. We are really excited about this release because, although it is technically a 'minor' product upgrade, it includes some hugely significant new features – see below for details.

HBSMR v3.5 new features

- SQL Server database option (including free version: SQL Server 2005 Express) for extra capacity, data security and reliability
- OASIS upload – automatically integrates the latest OASIS event records into HBSMR
- Simple Search – Google-like searching across the entire database
- Data browser – elegant read-only data viewing
- User-level permissions and data access – flexible configuration linked to Windows security, e.g. from a read-only "guest" account through to a remote contractor who can edit a pre-defined set of records
- Google Earth integration for users without GIS

Under the bonnet... the data browser form

The data browser form in v3.5 looks very different from a normal database screen. It is much easier to read because it is not cluttered by boxes and buttons etc. Also, fonts, colours, sizes, layout, and even data content are all completely configurable per client and per user. So how is this achieved? Data for each record is extracted from the relevant database tables, converted into XML, transformed into HTML using XSL, and then displayed in a web browser embedded within HBSMR, with formatting determined using CSS – simple really! And each of these stages is completely configurable per user, but we think we will need to offer a new training course before system administrators can start configuring this for themselves! The default configuration should be fine for most purposes, and of course the form is completely read-only, so users cannot alter any information unless given explicit rights to do so.

XML : eXtensible Mark-up Language holds the raw data in a format that can be transformed using XSL.

HTML : HyperText Mark-up Language – a language used to structure text, graphics and hyperlinks for display in a web browser.

XSL : eXtensible Stylesheet Language – a kind of programming language used to convert or manipulate XML data, in this case converting it into HTML.

CSS : Cascading Style Sheets – a language for defining how HTML should be displayed in a web browser (colours, fonts, layout etc).

New HBSMR projects & clients

We haven't space to list all the new clients and projects we've been working on over the last few months, but here is a sample:

- The Barbados Museum & Historical Society has purchased HBSMR plus MapLink for ArcGIS to help start a Historic Environment Record for the island
- The National Trust's HER system is now running on an exeGIS-hosted server, so that staff all over England, Wales and Northern Ireland can use one centrally-managed system via the internet
- The Peak District National Park is now using data from the overlapping county HERs within their corporate MapInfo GIS using HBSMR and some custom-built exeGIS tools
- Hertfordshire County HER has recently migrated to HBSMR
- We have recently completed "pre-migration data checks" for Coventry City and the Isle of Wight (a process of analysing existing data holdings in preparation for migration to HBSMR)
- We have helped The Wash Historic Landscape Characterisation project get underway by migrating various existing datasets into HBSMR
- We have integrated the Cheshire County Sites of Biological Interest dataset into HBSMR for use by the Natural Environment team, and developed other custom functionality for the Cheshire Monuments and Buildings at Risk Surveys
- The steady take-up of HBSMR-web continues, with projects underway for The Western Isles, Norfolk, Canterbury City, and Buckinghamshire
- We have set up LibraryLink as the shared document/image management system for the Planning and Historic Environment teams in the Yorkshire Dales National Park





TMS for woodland and tree management

The Tree Management System

TMS - A web-based approach

TMS is a new web-based solution for managing:

- Street trees
- Woodland
- Trees in parks & public spaces
- Veteran trees and ancient woodland
- Protected trees (TPOs)

Going from strength to strength

Our new Tree and Woodland Management System - TMS WebOffice, released last year, has a steadily increasing user base and is now supported by new specialist staff and a brand new release which includes many new and improved features such as:

- Full DIME/MIME associated document support

- Improved image handling
- The ability to produce reports with embedded photography
- Plus a huge list of usability options and other improvements

TMS WebOffice is continuing to draw clients' attention through its innovative browser-based interface which allows users to work from home or other remote offices. External consultants can even load survey data directly into the system without the need for extra licenses making TMS WebOffice an extremely cost effective and flexible product.

We will be showing at the ILAM and Arboricultural Association Conference this year, so why not pop along and see the system and all the improvements for yourself.

www.esdm.co.uk/tms.asp

Melanie Walls : (01874) 713065 : melaniew@esdm.co.uk

Field Surveyor *NEW PRODUCT

We have now taken the next major step forwards in field survey systems with the release of a data driven survey product called Field Surveyor (released in February 2006). The product is exciting because it moves our survey solutions from custom systems designed for a specific purpose to generic systems which can be used for virtually any form of survey. The system can be used to capture any number of data sets simultaneously, so is excellent for opportunistic survey as well as bulk data capture work.

Field survey products often fall down on the data synchronisation functionality, so to address this issue, Field Surveyor synchronises data using Microsoft Active Sync, including two way data transfer and map layer conversions. On-top of this we have designed an enterprise database synchronisation option, again built into Active Sync, that will transfer text and map data back to master databases via a web service – so you never need to return to the office! Key concepts include:

- Data driven – using xml – allowing users to configure the system for their own surveys using Microsoft Access
- Fully relational data support – capture data in the same format as in your main desktop databases
- Integrated photo handling – as you take pictures, they are displayed as thumbnail images ready to associate with survey records
- Intelligent data entry forms – including required fields, data validation, default values and 'sticky' values
- User friendly interfaces using the fastest data entry controls
- Bulk data loading options (huge data sets can be loaded in a compact format – 100,000 records with a 0.5 second retrieval time!)
- Automatic synchronisation – Active Sync controlled data transfer and synchronisation with master databases
- Easy to handle text data formats – XML or Tab separated (specifically structured so that they load instantly into Microsoft Office products)

The product can be used for any type of survey; habitat, woodland, tree, countryside access, highways, buildings (conservation and planning), works management etc. We supply the system ready to go – with survey forms configured to meet your exact requirements – all within the £495 + VAT.

PDAs, GPS and 'life changing' advances in technology

The PDA (hand held computer) market is moving on in leaps and bounds at such a rate that it is wise to take care when choosing systems. The



Field surveyor on a Mio 550 with integral GPS

latest improvements revolve around integrating GPS receivers and PDAs. At first sight this may appear useful but not 'life changing' – but that's where you would be wrong! Up until now GPS receivers were separate from PDAs and communicated using Bluetooth (a wireless radio link) which required a certain level of care and understanding to ensure that they worked properly. The problem has been summarised as follows:

"The Bluetooth issue is one that's plagued PDAs from the beginning. The problem is a result of a number of decisions by various groups.

1) Microsoft decided to allocate only one block of memory for drivers. In Windows Mobile 2003, that changed to two blocks, one for system drivers and one for application drivers. That helped a bit, but does not completely solve the problem. Bluetooth is considered a system driver.

2) HP decided not to allocate the driver memory until the Bluetooth radio was turned on. That gives you access to that memory when the radio is off, but, if another program gets there first, you get an 'Insufficient Memory' message. Actually, HP put the message in there to warn you. Other PPCs just fail to load the Bluetooth stack and don't tell you. Yet other PPCs allocate the driver memory whether or not Bluetooth is ever used.

3) The Bluetooth consortium decided that memory for every profile that is supported in a machine will be allocated when the Bluetooth stack is loaded. That means that, even if you only use one Bluetooth profile, memory is allocated for every one supported.

As a result, if you turn on the Bluetooth radio right after a soft-reset, you'll always be able to use it. If you wait, or turn it off, other drivers, or even programs, may use the memory that the Bluetooth stack needs. Since all the system drivers load into one specific block, even if you have tons of free memory, if drivers or programs have taken enough of the system driver block that the Bluetooth stack can't load, you get the warning message and the only thing you can do to make it work is to do a soft-reset.

HP could 'solve' the problem by pre-allocating the Bluetooth stack when you do a soft-reset. Microsoft could truly solve the problem by allowing drivers to load anywhere in memory."

Therefore by integrating the GPS into the PDA the Bluetooth link is avoided leading to simpler surveying, okay, maybe not quite 'life changing' but definitely a great step forward!

CMS V7

CMS is a tool that helps you to rationally plan your site management and then goes on to provide all the recording and data management you need to manage, monitor and report on your sites. Supported by a consortium of leading conservation organisations CMS was first developed in 1988 and now has an expanding client base of over 240 organisations across the UK and overseas.

CMS NaturaPlan in Eastern Europe

Many of the member states that have recently joined the European Union have amazing biodiversity and many sites of international conservation importance. They have also brought with them great understanding and experience in conservation management, but are keen to also adopt best practise from elsewhere. Many of the countries are developing conservation site planning and management processes and several have already adopted CMS NaturaPlan.

In a joint project with Eurosite and the Slovenian Institute for Nature Conservation, we facilitated a management planning workshop to prepare a CMS plan for the Topla Landscape Park. Topla is a small alpine valley in northern Slovenia and has many SAC and SPA features including beech forests, capercaillie, black grouse and pygmy owls. Working out how to manage the interplay of these features made for a challenging but very productive workshop.

Topla National Park, Slovenia



Topla site managers are making good use of CMS and are considering its expansion to other sites in Slovenia. John Harvey, the Eurosite representative for the project writes *"The use of the CMS software was of great value in developing the plan, providing a structure within which decisions could be recorded, modified and manipulated with ease and speed. The skills of the exeGesIS representative enabled the software to be used to its maximum value"*.

CMS, Eurosite and Institute for Slovenia Nature Conservation representatives discussing management planning at Topla



CMS NaturaPlan is also being used in Bulgaria and Estonia and in the latter case we were delighted to host a visit from Alex Lotman, a respected conservation biologist from the State Nature Conservation Centre. Alex has been using CMS NaturaPlan in Matsalu National Park, an important wetland site on the Baltic coast and he is presently investigating the adoption of CMS for the management of protected areas across Estonia.

Latest developments

CMS7 was released in 2005 and is proving to be a very successful upgrade. The new items most liked by users include the new flexible reporting structures offered by Crystal Reports and the ability to tag projects to other areas of work like funding sources, corporate targets, BAPs, etc. The increased ability to customise CMS7 is being used to adapt it to fit users own planning formats and terminology and even to translate the whole program into other languages.

The 2006 maintenance upgrade (free to users with a support and maintenance contract) includes:

- The simplification of CMS project codes
- The ability to merge multiple data volumes from a zip file aiding the production of a corporate dataset
- An option to copy planning elements between sites to speed up plan production

CMS on the Web

We will be releasing a CMS Web Viewer at the end of 2006. The Web Viewer will create a window onto your CMS data allowing you to make it available for colleagues across an intranet or perhaps to the public across the internet. Opening up aspects of site planning and management, perhaps by showing planned works or sharing management plans can be a very important tool in communicating aims and encouraging involvement.

www.esdm.co.uk/cms.asp

David Mitchel : (01874) 713077 : davidm@esdm.co.uk



PACS for development control and planning

The Planning Application Control System

PACS

The Planning Application Control System is a complete text and map management system for: development & building control, enforcement & appeals and land charges. Well established and with an active user group, PACS provides a low-cost solution to the management of development control and planning information.

Planning Portal Module

The Planning Portal module was released in July 2005 and is now in use with two thirds of PACS users. exeGesIS was amongst the first suppliers to develop a Planning Portal interface using XML schemas and to achieve the portal accreditation necessary to offer the highest of the 3 portal co-operation levels; 'starter', 'advanced' and 'integrated'. Shirley Hargreaves, PACS Administrator at Ceredigion County Council reports "We have been using the planning portal module for some months now and we have found no problems. It is very easy to use and planning applications, site maps etc are quickly produced at the touch of a button".

Planning on the web – 'with all the stops pulled out'

A challenging project was completed for Christchurch Borough Council earlier this year to ensure that all of their PACS electronic documents could be served through a firewall to the 'Dorset For You' public information web site (www.dorsetforyou.com). This was required in short order to ensure that the council achieved the highest possible 'Pendleton Points' at the next review. In a period of 3 weeks therefore we built a web service which handled requests for lists of documents associated with planning applications, and also then served the files to the 'Dorset For You' web site whilst maintaining a high level of security and an impressive response time.

The whole project was completed in record time, within budget and was up and running in time for the Pendleton assessment. So if you are up against crazy timescales or need a rapid technical solution – please give our development team a call – it's amazing what can be achieved!

Weblink: www.esdm.co.uk/pacs.asp

Contact: Carol Bateman on (01874) 713066

LibraryLink integration

The Yorkshire Dales National Park Authority had over 150,000 digital images and scanned planning application forms that they needed to be integrated with their PACS, so that they were each just one click away from the relevant planning record. We achieved this using LibraryLink, an advanced image and document handling application that automatically creates and makes available a thumbnail of every file and displays this in the relevant places in PACS. By clicking on the thumbnail, the original document opens directly in its native application such as MS Word, Adobe Acrobat, etc.

IDOX and PACS

The Dartmoor National Park Authority had already invested in a 3rd party document management system (DMS) and needed to maximise the benefits of this investment through integration with other packages. A customised link facility was quickly built allowing scanned documents in the DMS to be viewed directly from the PACS Development Control and Enforcement Modules.

IDOX integration with PACS

The screenshot shows a web browser window titled "Planning Documents Search Results - Microsoft Internet Explorer". The address bar shows a URL from dnp6:8080. The search results are displayed in a table with columns: Document Type, Date, Drawing Number, Document Description, and Sensitivity. The results show several documents related to Case Number 0620/06, including an Application Form, a Drawing, and a Design Statement. Below the table, there are buttons for "View All", "Save As", and "Export Folder". The interface also includes a sidebar with navigation options like "App Code", "Case Officer", "Registration", "Statist", "Proposal", "Plot Number", "Site Location", "Parish", "Address", "Easting (X)", "Northing (Y)", "Agent", "Payment & Validation", and "User Stamp".

Document Type	Date	Drawing Number	Document Description	Sensitivity
Application Form	18 Aug 2006		APPLICATION FOR LISTED BUILDING CONSENT	Public
Drawing	18 Aug 2006	337/PR/001		Public
Drawing	18 Aug 2006	337/S/001	SITE LOCATION PLAN	Public
Drawing	18 Aug 2006	337/S/001	SITE LOCATION PLAN - COLOUR EXTRACT	Public
Other	16 Aug 2006		DESIGN STATEMENT	Public

LibraryLink

Impressive document management – inside your applications

Digital images, documents, spreadsheets, databases and digital mapping applications need to inter-relate to inform day-to-day business processes. Digital assets must be readily accessible within the working environment, fully linked into desktop applications so that they are just a click away.

LibraryLink achieves this, providing seamless integration with your data management or digital mapping systems. From any mapped GIS feature, or database record, a single click will show all linked resources as thumbnails in the viewer. Clicking a thumbnail will open the original document in the appropriate application (e.g. a .doc file will open in Word, a video file will open in a media viewer, etc).

www.esdm.co.uk/librarylink.asp

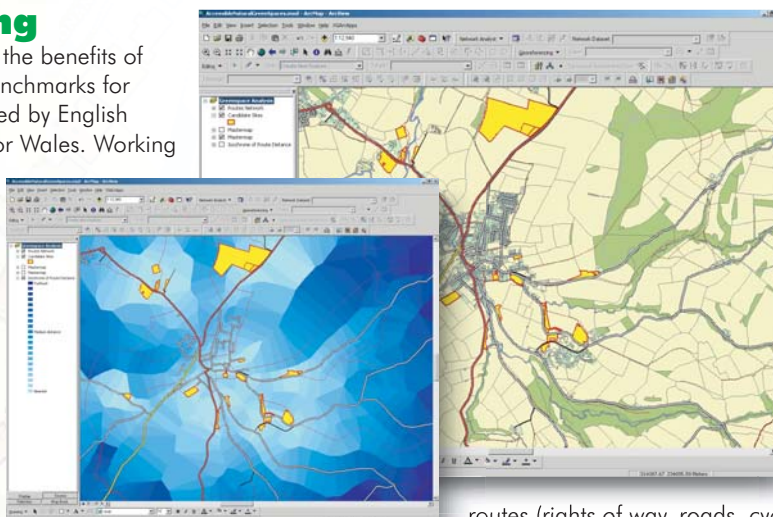
Crispin Flower : (01874) 713072 : crispinf@esdm.co.uk

The screenshot shows the LibraryLink application interface. It features a sidebar with a tree view of folders and files. The main area displays a grid of document thumbnails, including images and documents. The bottom of the window shows a status bar with file size and count information.

Recent Projects

Greenspace mapping

There has much attention focussed on the benefits of accessible greenspace recently and benchmarks for assessing provision have been published by English Nature and the Countryside Council for Wales. Working for Blaenau Gwent Council, exeGesIS developed a cost-effective approach to this work that using advanced GIS techniques for greenspace provision analysis in urban and rural contexts. The technique works out which areas of the population have access to natural greenspace, and does this by calculating the shortest actual walking (or driving) distance along local path and road networks to the nearest greenspace.



'workshop' style meeting provides the opportunity for local specialists to use their knowledge to review and update the inventory.

The last step in the process is to build a true, interconnected network of public access

routes (rights of way, roads, cycle routes, etc.) and

then use this network to calculate and map the regions where good access to greenspace does and doesn't exist.

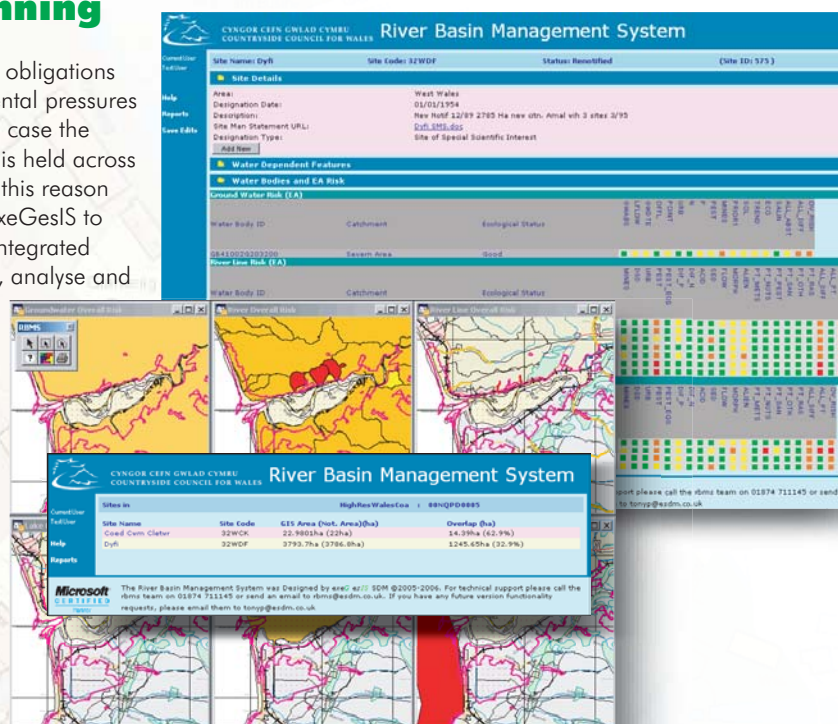
We work initially using existing spatial data to create a mapped inventory of candidate greenspaces and supplement this using data captured from aerial photographs. Once complete a

Jon Young : (01874) 713068 : jony@esdm.co.uk

River Basin Management Planning System (RBMPs)

The EU Water Framework Directive imposed important new obligations on local and central government to consider the environmental pressures on water dependent habitats and species. As is so often the case the information needed to inform local management decisions is held across a number of organisations and in a variety of formats. For this reason the Countryside Council for Wales awarded a contract to exeGesIS to build the 'River Basin Management Planning System' – an integrated MapInfo Professional and web-based tool to bring together, analyse and present relevant data and to simplify the consultation processes required by the Directive.

The approach offered many benefits to Chris Uttley the Water Policy Officer and his team, in that they are now able to use their existing desktop mapping system with an additional (MapBasic) interface that passes data to the a RBMPs web database at the head offices in Bangor. The web site, developed as part of the project, draws data from many different datasets held by the client, the Environment Agency and others and displays these in an easy to digest graphical format – far simpler than looking through hundreds or even (in some cases) thousands of data elements. The combination of both web interface and map displays allows users to view the various pressures such as sediment, nitrates, pesticides, abstraction and sanitary determinands in a matter of seconds.



For information regarding custom integrated GIS and web interfaces contact :

Tony Pettitt : (01874) 713061 : tonyp@esdm.co.uk

New Staff

Finding IT consultants with professional environmental / biological experience is a tall order and we are delighted therefore to have recently been joined by 6 new staff:

- Paul Cripps has a MSc in archaeological computing and is a GIS specialist
- Dr Keith Westcott – biologist and archaeological computing specialist
- Melanie Wallis is a forestry and IT specialist
- Simon Allen is an ecologist and GIS specialist
- Dominic Roche-Saunders is a trainee developer
- Andrew May is a developer and holds a PhD in mathematics

Head office:

**exeGesIS SDM Ltd,
Great House Barn, New Street,
Talgarth, Powys, LD3 0AH**

**(01874) 711145
xginfo@esdm.co.uk**

www.esdm.co.uk

See www.esdm.co.uk/StaffInfo.asp for more details.