

# Map Templates and Datasets

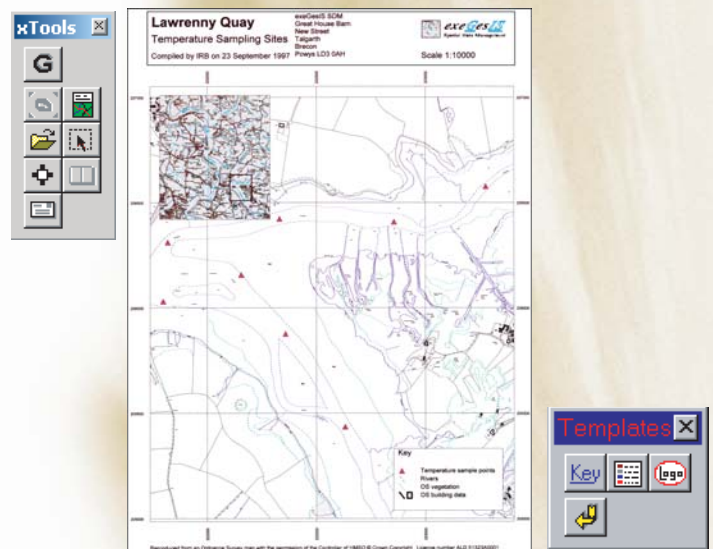
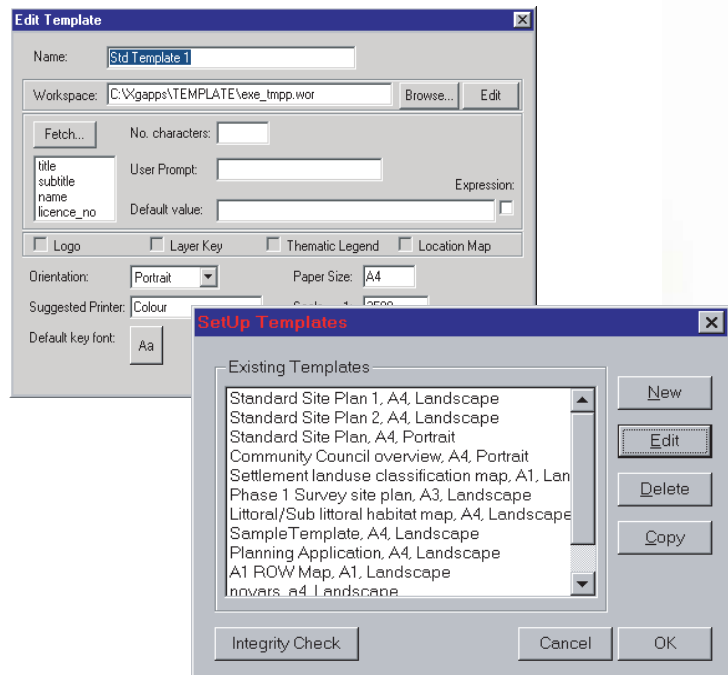
## Simplifies Creating Professional Map Printouts

The Map Templates module is a simple, user friendly MapInfo Interface that allows users to produce professional maps.

Standard templates may be created depicting an organisations name, logo, address, map scale, legend, copyright notices etc. These are ideal for showing particular sites or specialist features including Nature Reserves, Planning Applications and Archaeological Sites.

Creating a map layout from scratch every time a print is required can be time consuming, leading to mistakes or poorly presented maps at non-standard scales. Using the templates module, a variety of standard and specialist map layouts can be created for different purposes, paper orientations and sizes. Users can select their required map layout from an unlimited list of user configurable layouts, then be automatically prompted for variable text such as titles. This ensures that presentable, professional maps can be created quickly at the desired scale.

- Automatic prompting for user variables such as title, compiled by, comments, etc.
- Automatic grid lines and numbering
- Save layouts option (making it possible to print an identical map area at a later date, using updated base data, for easy comparisons)
- Zoom in/out and re-centre template option
- Date and/or scale can be displayed without requiring user input
- Auto key creation - for layers registered in the DataSet module
- Intuitive user interface and configuration screens
- Rotation of vector data (including labels)
- Auto Scale button calculates the scale at which to display the current map information to ensure that it fits on the chosen template. This can also be adjusted manually
- Watermarking - automatically generates embedded watermark within final print



## Features of the Datasets Module

A key may be required in a map template of features which are not thematically mapped (e.g. rivers, buildings). This module allows DataSets to be configured by their colour, symbol/line style etc. for automatic key generation.

- Allows a system administrator to keep track of data, where it is stored, when it was updated, etc.
- DataSets can be grouped so that a user with specific interests can call a particular group of DataSets, rather than all the DataSets that are available
- DataSet open/close option

**For further details please call:**

**Carol Bateman : 01874 713066 : [carolb@esdm.co.uk](mailto:carolb@esdm.co.uk)**  
**General enquiries : 01874 711145 : [xginfo@esdm.co.uk](mailto:xginfo@esdm.co.uk)**

## Features of the Map Templates Module

- Mapper window is sized to fit within the frame of the template
- Optional location map insert with a box representing the area covered in the main mapper
- Option to ensure users only print from templates to ensure standards
- Centres any other map windows (e.g. 1:50,000 raster location map) on the same point as the main map (large scale), if required
- Company or project logos