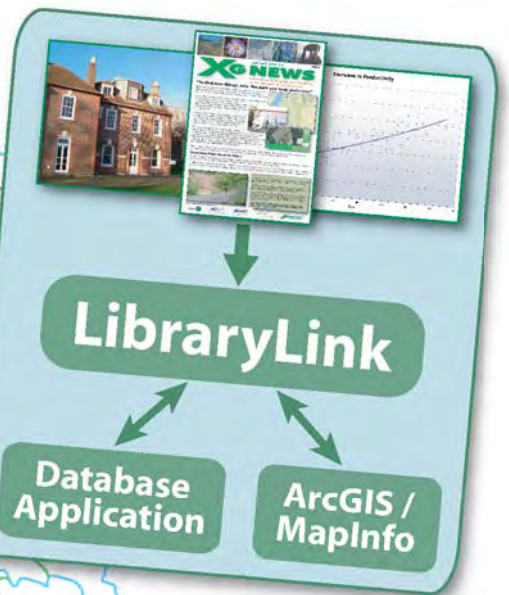
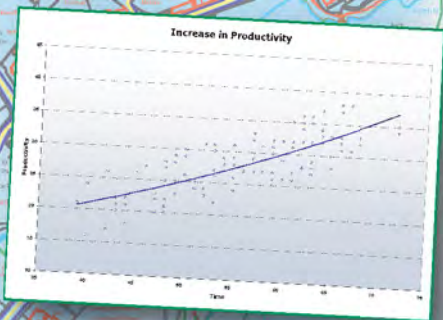


LibraryLink

Image and Document Management



Integrates with your database or GIS application

Provides instant access to all your digital assets

Powerful and cost-effective for any size of business/organisation

LibraryLink

Image and Document Management

What is LibraryLink?

LibraryLink is a digital image and document management system that integrates seamlessly into ESRI ArcGIS, MapInfo Professional, custom databases and all exeGesIS products.

The backbone of the LibraryLink system is a relational database storing a thumbnail for each of your digital files and a comprehensive set of metadata fields (such as title, annotation, copyright, keywords, etc.).

Why use LibraryLink?

Digital files on computer hard drives have replaced paper and photographic archives and it has become a core challenge for businesses and organisations to catalogue and manage these digital assets.

Today almost all of our decision making processes depend on retrieving and assessing digital information efficiently and reliably.

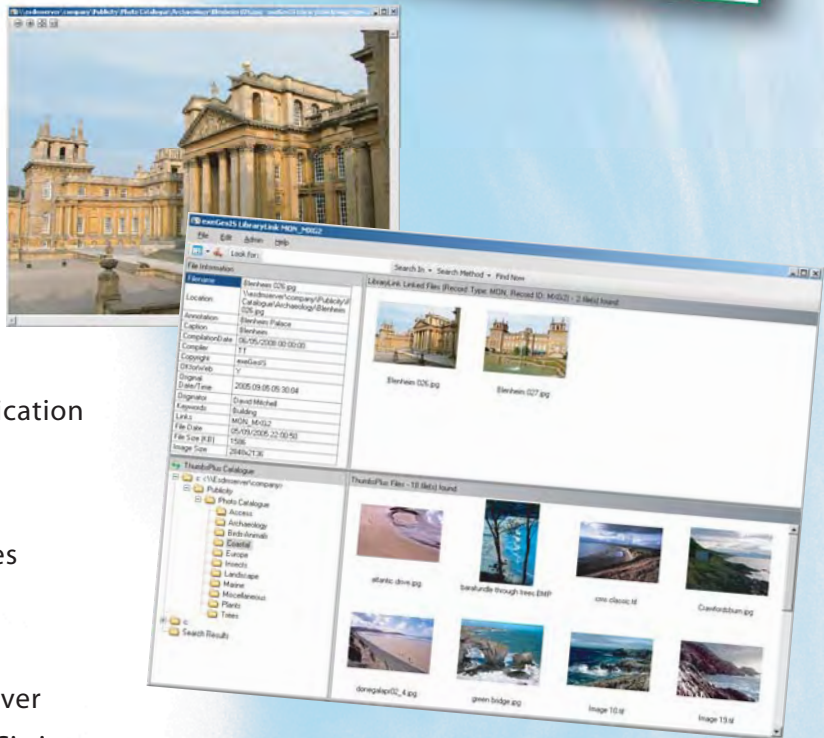
With LibraryLink any business or organisation can now integrate digital asset management into their GIS and database systems and immediately benefit from its comprehensive set of tools.

Features

- ◆ Access digital files from your database or GIS application
- ◆ Allows fast searches on metadata fields
- ◆ Integrates with MS Sharepoint
- ◆ Catalogue and view more than 100 digital file types
- ◆ Compatible with EXIF and IPTC metadata formats
- ◆ Full multi-user viewing and editing over networks
- ◆ Data storage in MS Access database or MS SQL Server
- ◆ Compatible with Microsoft Terminal Services and Citrix
- ◆ Share your linked documents and images with LibraryLink Web

LibraryLink checklist

- ✓ Integrates with ESRI ArcGIS, MapInfo Professional and all exeGesIS data management solutions
- ✓ Links any number of digital images and documents to individual database and GIS records
- ✓ Maintains a searchable and publishable catalogue of your digital assets, including annotation and keywords
- ✓ Manages over 100 image formats (including JPG, BMP, TIFF, GIF, PNG, RAW and many more)
- ✓ Compatible with all standard document file formats (Adobe PDF, Microsoft Word, Excel, etc.)
- ✓ Provides advanced image processing tools
- ✓ For more details visit our website:
<http://www.esdm.co.uk/LibraryLink.asp>



Further details:

Jon Young : 01874 713068 jony@esdm.co.uk
General enquiries : 01874 711145 xginfo@esdm.co.uk
Internet: <http://www.esdm.co.uk/LibraryLink.asp>