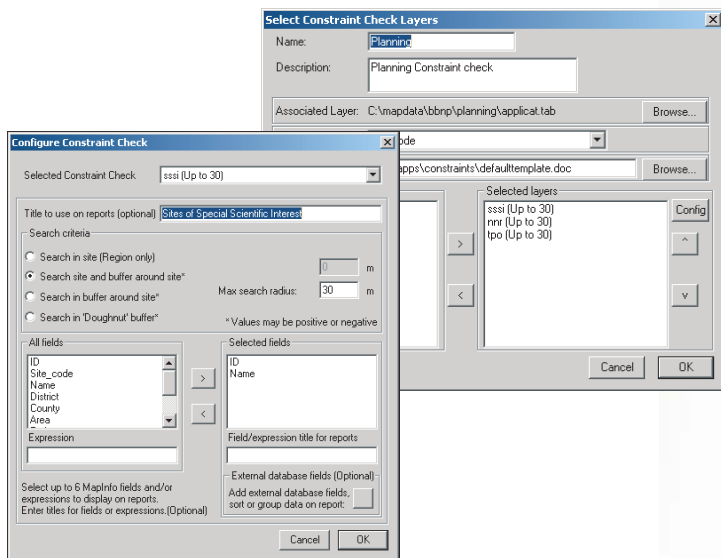


Constraint Checker Module

MapInfo Interface

Geographic Information Systems (GIS) are often used to handle a large number of datasets covering extensive areas. A user needs the ability to find out what constraints might affect a chosen site. For example a Planner might need to know if the specified site is within 500m of a sewage plant, 50m of a Site of Special Scientific Interest, whether there are overhead power cables, bat roosts, Scheduled Ancient Monuments or Rights of Way on the site. These constraints must then be displayed on screen with sufficient information for the user to either assess their importance immediately, or to go to a database or paper record to investigate them further.

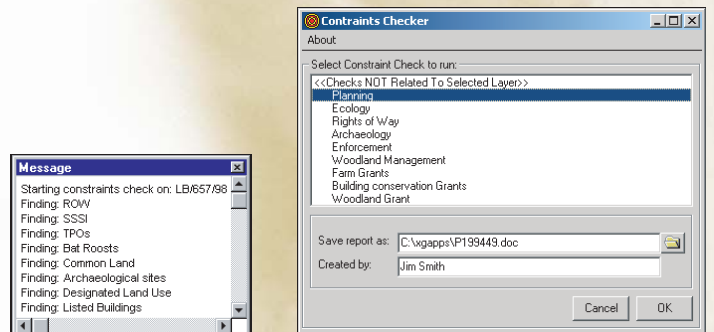
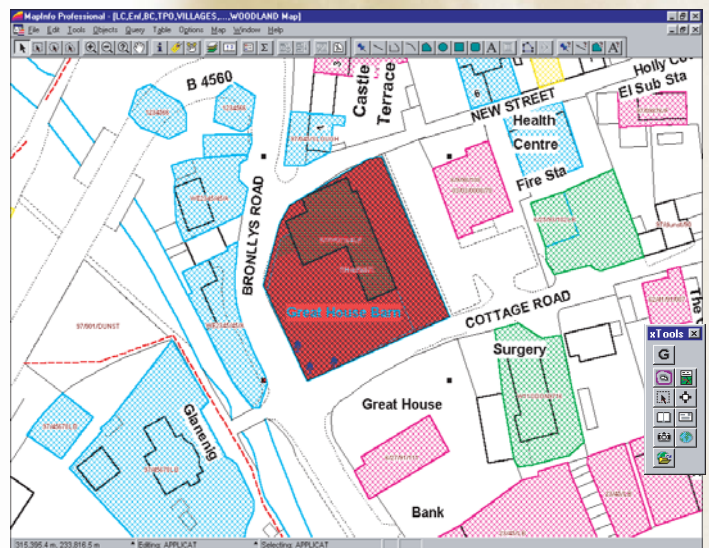


Constraint checking is an essential tool for all specialists who need information in order to make the right decision, whether it is a planning application, consultation for a felling license, right of way diversion or an environmentally sensitive area (ESA) assessment. The advantages of storing data centrally using GIS technology are generally apparent. It is equally important to be able to retrieve this information rapidly and display it in an understandable manner.

Using standard MapInfo menu options can be time consuming and confusing, leading to mistakes, or incomplete checks. This is especially apparent with systems being used for handling large numbers of data sets stored in many different directories. The constraint checking module will allow a user to perform these operations repeatedly and reliably with a matter of 2 or 3 button clicks.

Features of the Constraint Checker Module

- Intuitive user interface and configuration screens
- Meta data sets configuration module for keeping track of your map layers
- Integrity checking of configuration data, to locate potential faults in your tables i.e. incomplete records, missing tables etc.
- External databases can be linked to MapInfo layers and then selected data displayed on reports
- Automatic sensing of the most likely constraint check to run
- Automatic report generation in Microsoft Word for maximum flexibility, with grouping and ordering facilities
- Rigorous searching using polygon buffers
- Layer being searched need not be loaded or displayed



For further details please call:

Carol Bateman : 01874 713066 : carolb@esdm.co.uk
 General enquiries: 01874 711145 : xginfo@esdm.co.uk