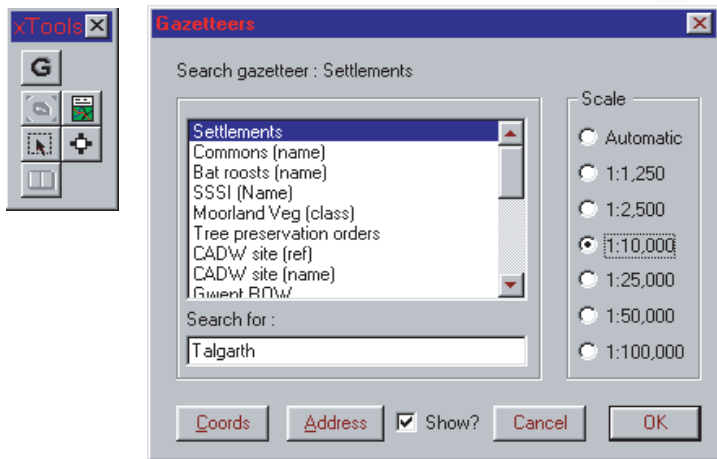


# Environments and Gazetteers

## MapInfo Interfaces

Geographic Information Systems (GIS) are often used to handle datasets which cover very large areas. A user needs the ability to locate a site or point in the quickest manner possible, then display it on screen at an appropriate scale, (using standard MapInfo zoom tools can be time consuming and inflexible).

A gazetteer is a list of names along with their spatial position. The gazetteer allows you to rapidly locate a site by a named area such as the nearest town, farm or woodland, or even locate a site by historic building, road, planning application or natural feature.



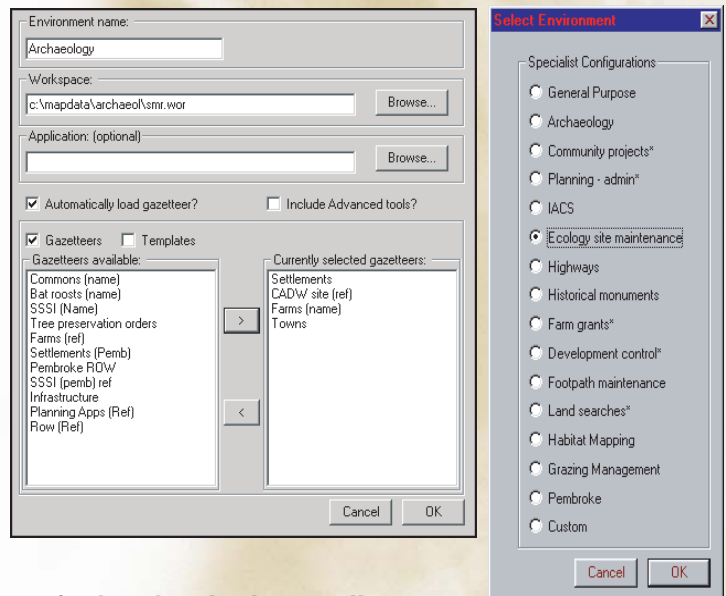
The Environments and Gazetteers module enables specialist work environments to be set-up for different users who have specific requirements.

For example, an archaeologist may wish to view scheduled ancient monuments with an excavation overlay automatically set editable. The archaeologist would also require very specific searches such as Historic Monuments number, Historic Period or Archaeological Trust reference number, but would be unlikely to need to find a site based on a rare species gazetteer or agricultural land classification.

The user-configurable module enables specific interfaces to be set-up for every specialist or section, providing users with exactly the data they wish to maintain or analyse, along with specialist searches available at the click of a button.

## Features of the Environments and Gazetteers Module

- Meaningful names can be associated with workspaces and searches
- The environments can also be used to launch specialist button pads and applications adding the final touch to a users environment
- Each environment can provide access to all, a subset or no gazetteers
- Integrity checking of data to locate potential faults in data tables, e.g. incomplete records, missing indexes
- Automatic pre-set, object and attribute mapper scaling to display a site quickly at the right scale (i.e. zoomed in for a standing stone but zoomed out for a town)
- Ability to find a site using a search string. If an exact match is found the site will immediately be displayed in the active mapper window. If an exact match cannot be made the closest match to the search entered will be highlighted
- Tables can be grouped in a working environment with a workspace and application if necessary
- A configuration module to set-up each environment along with a series of loading dialogues to assist the user when selecting an environment
- Intuitive user interface and configuration screens



**For further details please call:**

**Carol Bateman : 01874 713066 : [carolb@esdm.co.uk](mailto:carolb@esdm.co.uk)  
General enquiries : 01874 711145 : [xginfo@esdm.co.uk](mailto:xginfo@esdm.co.uk)**